



BOXTEC

KPC2

Ultra Small Footprint
NUC Style PC



System



Motherboard
F38



Storage
64GB eMMC



Processor
Intel Celeron
J6412



Memory
4GB RAM



Supported OS
Win 10, Linux, Android 13,
ChromeOS Flex, Inefi Aura

Certification



CE Mark
Class A



FCC
Class A



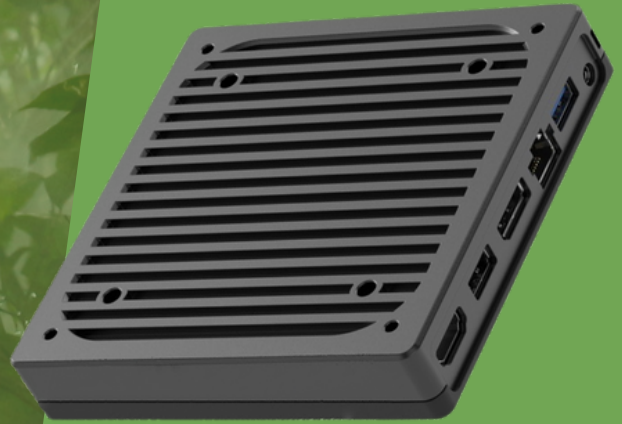
LVD



Small AND Mighty!

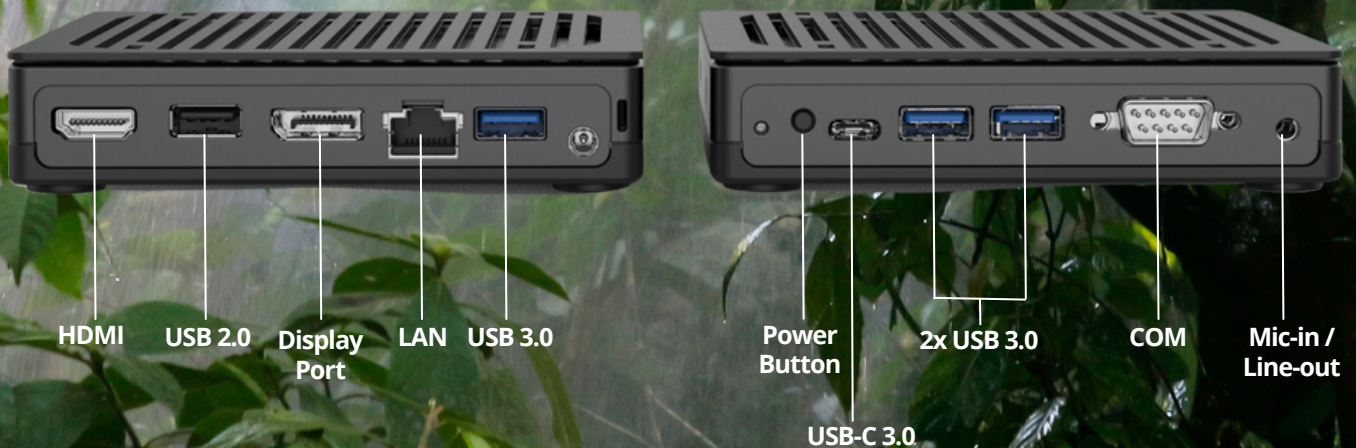
KPC2 is the perfect combination of efficient desktop power with a footprint so small it can be easily implemented into nearly any service or office environment.

Using the trusted Intel J6412 quad core processor along with 4GB of DDR4 and 64GB of onboard super fast eMMC storage, KPC2 brings the power you need in a silent compact package.



Seamless Connections

KPC2 comes equipped with a versatile array of I/O ports, enabling seamless connections to various devices.



Here's the detail...

System	Motherboard	F38
	Processor	Intel Celeron J6412 2.4GHz
	Memory	4GB DDR4 RAM (onboard)
	Storage	64GB eMMC (onboard)
	Supported OS	Windows 10, Linux, Android 13, ChromeOS Flex, Inefi Aura
I/O ports	USB	3 x USB3.0 / 1 x 2.0 Type A / 1x USB Type-C
	Serial port	1 x RJ45 (powered RS232) (COM1/2 default 5V, COM3 default 12V)
	LAN	1 x RJ45
	Display	1 x HDMI / 1x DisplayPort
	FeDP	1
	DC jack	1
Power	Power supply	36W / 12v
Certificate	EMC & safety	FCC Class A / CE Mark / LVD
Environment	Operating temperature	0°C - 55°C (32°F - 131°F)
	Storage temperature	-20°C - 60°C (-4°F - 140°F)
	Humidity	20% - 85°C RH non-condensing
Weight & dimensions		128 x 128 x 24mm (5" x 5" x 0.95"), 1kg (2.2lbs)
Mounting		75mm/100mm Standard VESA

PRODUCT SPECIFICATIONS AND DATA ARE SUBJECT TO CHANGE WITHOUT NOTICE



BT04-BRC-ECOBX-01